

Alabama

Labor Market Information News

Table of Contents

Economic Brief	1
LMI Definitions	2
Consumer Price Index	6
Current Employment Statistics	
Employment	3-5, 7-14
Hours and Earnings	6
Local Area Unemployment Statistics	15-19
Release Schedule	20
Technical Support	20

**August 2025
Publication**



Economic Brief

Alabama's seasonally adjusted labor force participation rate, at 57.9 percent in July, was lower than the revised June 2025 estimate of 58.0 percent and higher than 57.5 percent recorded in July 2024. The civilian labor force was 2,383,940 in July, compared to 2,386,087 in June 2025 and 2,348,866 a year ago.

	Not Seasonally Adjusted			Seasonally Adjusted		
	Jul p 2025	Jun r 2025	Jul r 2024	Jul p 2025	Jun r 2025	Jul r 2024
Civilian Labor Force ¹	2,378,517	2,387,447	2,362,412	2,383,940	2,386,087	2,348,866
Employment	2,308,918	2,314,664	2,281,028	2,311,434	2,310,447	2,277,558
Unemployment	69,599	72,783	81,384	72,506	75,640	71,308
AL Unemployment Rate	2.9	3.0	3.4	3.0	3.2	3.0
AL Labor Force Participation Rate	57.8	58.1	57.9	57.9	58.0	57.5
U.S. Unemployment Rate	4.6	4.4	4.5	4.2	4.1	4.2
U.S. Labor Force Participation Rate	62.7	62.6	63.2	62.2	62.3	62.7
Wage and Salary Employment ²	2,211,200	2,219,500	2,182,500	2,214,500	2,211,100	2,189,700

¹Place of residence basis. ²Place of work basis. ³Preliminary. ⁴Revised.

Estimates prepared by the Alabama Department of Workforce in cooperation with the Bureau of Labor Statistics, based on a 2024 benchmark.

The similar national labor force participation rate for July, at 62.2 percent, was lower than the 62.3 percent reported the prior month and lower than 62.7 from a year ago.

The State's seasonally adjusted unemployment rate, at 3.0 percent in July, was lower than 3.2 percent from the prior month and unchanged from 3.0 percent reported a year ago. July's rate represented 72,506 unemployed persons, compared to 75,640 in June 2025 and 71,308 in July 2024.

The comparable national unemployment rate for July, at 4.2 percent, was higher than 4.1 percent from the prior month and unchanged compared to the year ago rate of 4.2 percent.

Alabama's not seasonally adjusted wage and salary employment, totaling 2,211,200 in July, declined by 8,300 jobs over the month. Losses were in government (-9,400), manufacturing (-600), construction (-400), information (-300), and other services (-300). Employment gains occurred in private education and health services (+1,500), professional and business services (+500), leisure and hospitality (+300), financial activities (+200), and mining and logging (+200). Employment was unchanged in trade, transportation, and utilities.

Over the past twelve months, total nonagricultural wage and salary employment increased by 28,700 jobs. Annual gains were in private education and health services (+10,100); government (+5,100); leisure and hospitality (+4,600); manufacturing (+4,400); trade, transportation, and utilities (+2,400); other services (+1,700); construction (+1,400); and professional and business services (+800). Annual losses were in financial activities (-1,600) and mining and logging (-200). Employment in information remained unchanged.



LMI Definitions

American Community Survey (ACS): The ACS is an ongoing survey that provides data every year by giving communities the current information they need to plan investments and services. Information from the survey generates data that help determine how more than \$400 billion in federal and state funds are distributed each year.

Bureau of Labor Statistics (BLS): The Bureau is a division of the U.S. Department of Labor and functions as the principal data gathering agency of the federal government in the field of labor economics. The BLS collects, processes, analyzes and disseminates data relating to employment, unemployment, the labor force, productivity, prices, family expenditures, wages, industrial relations, and occupational safety and health.

Census Tract: A small relatively permanent statistical subdivision of a county delineated by local committees of census data users for the purpose of collecting and presenting census data. It is worth noting that census tract conform to county lines (that is they are always sub-sets of a county), but may not follow zip code lines.

Civilian Labor Force: The civilian labor force comprises the total of all civilians age 16 and older classified as employed or unemployed, or seeking employment. This gives employers a measure of the labor pool.

Consumer Price Index (CPI): A measure of the average change in prices over time for a set group of goods and services. The Bureau of Labor Statistics publishes CPIs for two population groups: (1) for all urban consumers (CPI-U) which covers approximately 80 percent of the total population and (2) for all urban wage earners and clerical workers (CPI-W) which covers 32 percent of the total population. Among the CPI components are the costs of housing, food, transportation, and energy. While the CPI is not technically a cost of living index, it is often used to indicate changes in the cost-of-living.

Current Employment Statistics (CES) Survey: A monthly survey of nonfarm business establishments used to collect nonfarm payroll employment, and worker hours and earnings by industry and area. Through the Federal/State cooperative effort, these data are used to compute current monthly employment, and hours and earnings estimates, by industry, for the nation, the 50 states and the District of Columbia, and over 250 Metropolitan Statistical Areas (MSA's).

Current Population Survey (CPS): A monthly household survey of the civilian non-institutional population of the United States. This BLS survey provides labor market statistics (e.g., employment, unemployment and wages) by industry, occupation, and demographic characteristics. The Bureau of the Census collects data for this survey in cooperation with BLS.

CES Employment: A count of all persons who worked full or part time or received pay from a nonagricultural employer for any part of the pay period that included the 12th day of the month. Because this count comes from a survey of employers, persons who work for two different companies could be counted twice. Therefore, non-farm payroll employment is really a count of the number of jobs rather than the number of persons employed. This count is also based on where the jobs are located, regardless of where the workers reside. Non-farm payroll employment data are collected and compiled by Current Employment Statistics (CES) Survey.

Labor Force Participation Rate: The labor force participation rate represents the number of people in the labor force as a percentage of the civilian noninstitutional population. In other words, the participation rate is the percentage of the population that is either working or actively looking for work. The labor force participation rate is calculated as: $(\text{Labor Force} \div \text{Civilian Noninstitutional Population}) \times 100$.

Labor Market Information (LMI): A body of knowledge that includes a variety of economic, social, and demographic information. This information describes current conditions and forecasts employment conditions at a future date. LMI is comprised of population data, labor force data, industry data, occupational data, general economic trends, and career data.

Local Area Unemployment Statistics (LAUS): A federal-state cooperative program, which produces monthly estimates of total employment and unemployment for approximately 7,500 areas.

Metropolitan Area (MA): A Core Based Statistical Area associated with at least one urbanized area that has a population of at least 50,000. The Metropolitan Statistical Area comprises the central county or counties containing the core, plus adjacent outlying counties having a high degree of social and economic integration with the central county as measured through commuting.

North American Industrial Classification System (NAICS): A system of identifying industry activity, NAICS is replacing the U.S. Standard Industrial Classification (SIC) system. NAICS will reshape the way we track our industries. NAICS was developed jointly by the U.S., Canada, and Mexico to provide new comparability in statistics about business activity across North America.

Occupational Employment Statistics (OES): A federal state cooperative program, which collects detailed occupational data by industry in a three-year cycle. The OES survey is an annual mail survey measuring occupational employment and occupational wage rates for wage and salary workers in nonfarm establishments, by industry. On a national level, the survey samples approximately 400,000 establishments per year, taking 3 years to fully collect the sample of 1.2 million establishments.

Seasonal Adjustment: A statistical technique that eliminates the influences of weather, holidays, the opening and closing of schools, and other recurring seasonal events from economic time series. This permits easier observation and analysis of cyclical, trend, and other nonseasonal movements in the data.

Standard Occupational Classification (SOC): This is an occupational coding system that was presented by the Bureau of Labor Statistics (BLS) to replace and consolidate several previous coding systems used to classify occupations. The consolidated coding systems include the Occupational Employment Statistics (OES), the Dictionary of Occupational Titles (DOT), and the grouping of occupational titles used by the Census based on survey responses.

Workforce Regions: State specific geographical area, designated by the governor, within which employment and training services are provided under the Workforce Innovation and Opportunity Act (WIOA) in Alabama.

EMPLOYEES IN NONAGRICULTURAL INDUSTRIES IN ALABAMA 1/
(in thousands)

INDUSTRY				NET CHANGE FROM:		PERCENT CHANGE FROM:	
	Jul p 2025	Jun r 2025	Jul r 2024	Jun r 2025	Jul r 2024	Jun r 2025	Jul r 2024
Total Nonfarm	2211.2	2219.5	2182.5	-8.3	28.7	-0.37	1.32
Total Private	1798.4	1797.3	1774.8	1.1	23.6	0.06	1.33
Goods Producing	407.5	408.3	401.9	-0.8	5.6	-0.20	1.39
Mining and Logging	9.3	9.1	9.5	0.2	-0.2	2.20	-2.11
Mining (except Oil and Gas)	4.7	4.7	4.8	0.0	-0.1	0.00	-2.08
Construction	108.9	109.3	107.5	-0.4	1.4	-0.37	1.30
Construction of Buildings	25.5	25.5	24.9	0.0	0.6	0.00	2.41
Heavy and Civil Engineering Construction	18.7	18.7	18.2	0.0	0.5	0.00	2.75
Specialty Trade Contractors	64.7	65.1	64.4	-0.4	0.3	-0.61	0.47
Manufacturing	289.3	289.9	284.9	-0.6	4.4	-0.21	1.54
Durable Goods Manufacturing	195.9	196.2	193.7	-0.3	2.2	-0.15	1.14
Wood Product Manufacturing	18.8	18.9	18.6	-0.1	0.2	-0.53	1.08
Primary Metal Manufacturing	18.7	18.7	18.4	0.0	0.3	0.00	1.63
Fabricated Metal Product Manufacturing	28.0	28.0	27.4	0.0	0.6	0.00	2.19
Machinery Manufacturing	10.6	10.6	10.5	0.0	0.1	0.00	0.95
Computer and Electronic Product Manufacturing	7.4	7.4	7.2	0.0	0.2	0.00	2.78
Elect.Equipment, Appliance & Component Manfng	6.8	6.8	6.7	0.0	0.1	0.00	1.49
Transportation Equipment Manufacturing	79.8	80.0	79.7	-0.2	0.1	-0.25	0.13
Motor Vehicle Manufacturing	23.1	23.2	22.7	-0.1	0.4	-0.43	1.76
Motor Vehicle Parts Manufacturing	30.3	30.4	30.4	-0.1	-0.1	-0.33	-0.33
Aerospace Products & Parts Manufacturing	14.9	14.9	14.9	0.0	0.0	0.00	0.00
Furniture and Related Product Manufacturing	8.8	8.8	8.7	0.0	0.1	0.00	1.15
Non-Durable Goods Manufacturing	93.4	93.7	91.2	-0.3	2.2	-0.32	2.41
Food Manufacturing	34.8	34.9	33.2	-0.1	1.6	-0.29	4.82
Animal Slaughtering and Processing	25.9	26.0	24.8	-0.1	1.1	-0.38	4.44
Textile Mills	3.7	3.7	3.9	0.0	-0.2	0.00	-5.13
Fiber, Yarn, and Thread Mills	1.3	1.3	1.3	0.0	0.0	0.00	0.00
Textile Product Mills	2.3	2.4	2.4	-0.1	-0.1	-4.17	-4.17
Textile Furnishings Mills	1.0	1.0	1.0	0.0	0.0	0.00	0.00
Paper Manufacturing	11.6	11.7	11.5	-0.1	0.1	-0.85	0.87
Pulp, Paper, and Paperboard Mills	6.7	6.7	6.6	0.0	0.1	0.00	1.52
Plastics and Rubber Products Manufacturing	18.3	18.4	18.2	-0.1	0.1	-0.54	0.55
Service Providing	1803.7	1811.2	1780.6	-7.5	23.1	-0.41	1.30
Private Service Providing	1390.9	1389.0	1372.9	1.9	18.0	0.14	1.31
Trade, Transportation, and Utilities	410.7	410.7	408.3	0.0	2.4	0.00	0.59
Wholesale Trade	79.2	79.0	80.0	0.2	-0.8	0.25	-1.00
Merchant Wholesalers, Durable Goods	41.7	41.6	41.6	0.1	0.1	0.24	0.24
Merchant Wholesalers, Nondurable Goods	22.7	22.7	23.0	0.0	-0.3	0.00	-1.30
Wholesale Trade Agents and Brokers	14.8	14.7	15.4	0.1	-0.6	0.68	-3.90

p = Preliminary r = Revised

1/ Data include, on a place of work basis, all full and part-time nonagricultural wage and salary employees who worked during or received pay for, any part of the pay period which included the 12th of the month. Proprietors, self-employed persons, workers in private households and unpaid family workers are excluded. Estimates adjusted to a 2024 benchmark, based on the North American Industry Classification System (NAICS), 2022. Totals may not add due to rounding.

EMPLOYEES IN NONAGRICULTURAL INDUSTRIES IN ALABAMA ^{1/}

(in thousands)

INDUSTRY				NET CHANGE FROM:		PERCENT CHANGE FROM:	
	Jul p 2025	Jun r 2025	Jul r 2024	Jun r 2025	Jul r 2024	Jun r 2025	Jul r 2024
Retail Trade	241.9	242.5	238.6	-0.6	3.3	-0.25	1.38
Motor Vehicle and Parts Dealers	33.6	33.7	33.9	-0.1	-0.3	-0.30	-0.88
Building Mat. & Garden Equip. and Supplies Dealers	23.9	24.5	23.8	-0.6	0.1	-2.45	0.42
Food and Beverage Retailers	37.4	37.4	36.8	0.0	0.6	0.00	1.63
General Merchandise Retailers	62.8	62.7	62.0	0.1	0.8	0.16	1.29
Department Stores	13.8	13.9	13.9	-0.1	-0.1	-0.72	-0.72
Warehouse Clubs, Supercenters, and Other General	49.0	48.8	48.1	0.2	0.9	0.41	1.87
Health and Personal Care Retailers	15.7	15.8	15.9	-0.1	-0.2	-0.63	-1.26
Trans, Warehousing, and Utilities	89.6	89.2	89.7	0.4	-0.1	0.45	-0.11
Utilities	12.9	12.9	13.0	0.0	-0.1	0.00	-0.77
Elect. Power Gen., Transmission & Distribution	10.7	10.7	10.8	0.0	-0.1	0.00	-0.93
Transportation and Warehousing	76.7	76.3	76.7	0.4	0.0	0.52	0.00
Truck Transportation	26.5	26.6	26.8	-0.1	-0.3	-0.38	-1.12
General Freight Trucking	16.8	16.8	16.9	0.0	-0.1	0.00	-0.59
Information	22.9	23.2	22.9	-0.3	0.0	-1.29	0.00
Telecommunications	6.9	7.0	7.3	-0.1	-0.4	-1.43	-5.48
Financial Activities	103.4	103.2	105.0	0.2	-1.6	0.19	-1.52
Finance and Insurance	74.9	75.1	76.4	-0.2	-1.5	-0.27	-1.96
Credit Intermediation and Related Activities	37.3	37.3	37.7	0.0	-0.4	0.00	-1.06
Depository Credit Intermediation	29.5	29.5	29.9	0.0	-0.4	0.00	-1.34
Insurance Carriers and Related Activities	31.7	31.9	33.2	-0.2	-1.5	-0.63	-4.52
Insurance Carriers	13.6	13.6	14.0	0.0	-0.4	0.00	-2.86
Real Estate and Rental and Leasing	28.5	28.1	28.6	0.4	-0.1	1.42	-0.35
Professional and Business Services	261.2	260.7	260.4	0.5	0.8	0.19	0.31
Professional, Scientific and Technical Services	130.0	129.5	126.3	0.5	3.7	0.39	2.93
Architectural, Engineering, and Related Services	35.1	34.8	33.3	0.3	1.8	0.86	5.41
Computer Systems Design and Related Services	28.1	28.2	26.8	-0.1	1.3	-0.35	4.85
Management of Companies and Enterprises	18.0	18.0	17.5	0.0	0.5	0.00	2.86
Admin, Support & Waste Mngmt & Remediation Svcs.	113.2	113.2	116.6	0.0	-3.4	0.00	-2.92
Private Education and Health Services	271.8	270.3	261.7	1.5	10.1	0.55	3.86
Private Educational Services	30.0	30.0	29.4	0.0	0.6	0.00	2.04
Health Care and Social Assistance	241.8	240.3	232.3	1.5	9.5	0.62	4.09
Ambulatory Health Care Services	111.5	110.7	109.6	0.8	1.9	0.72	1.73
Offices of Physicians	43.7	43.7	43.8	0.0	-0.1	0.00	-0.23
Hospitals	46.3	46.0	44.5	0.3	1.8	0.65	4.04
Nursing and Residential Care Facilities	45.8	45.4	43.8	0.4	2.0	0.88	4.57
Social Assistance	38.2	38.2	34.4	0.0	3.8	0.00	11.05
Leisure and Hospitality	219.8	219.5	215.2	0.3	4.6	0.14	2.14
Arts, Entertainment, and Recreation	25.5	25.3	26.0	0.2	-0.5	0.79	-1.92
Amusements, Gambling, and Recreation	21.6	21.4	21.5	0.2	0.1	0.93	0.47
Accommodation and Food Services	194.3	194.2	189.2	0.1	5.1	0.05	2.70
Food Services and Drinking Places	177.8	177.7	171.0	0.1	6.8	0.06	3.98
Restaurants and Other Eating Places	166.2	166.2	161.9	0.0	4.3	0.00	2.66
Full-Service Restaurants	69.3	70.6	65.0	-1.3	4.3	-1.84	6.62
Limited-Services Eating Places	96.9	95.6	96.9	1.3	0.0	1.36	0.00
Other Services	101.1	101.4	99.4	-0.3	1.7	-0.30	1.71
Government	412.8	422.2	407.7	-9.4	5.1	-2.23	1.25
Federal Government	57.2	57.3	58.1	-0.1	-0.9	-0.17	-1.55
State Government	131.6	131.7	129.0	-0.1	2.6	-0.08	2.02
State Government Educational Services	74.0	74.3	72.5	-0.3	1.5	-0.40	2.07
State Government Excluding Educational Services	57.6	57.4	56.5	0.2	1.1	0.35	1.95
Local Government	224.0	233.2	220.6	-9.2	3.4	-3.95	1.54
Local Government Educational Services	93.5	103.0	93.2	-9.5	0.3	-9.22	0.32
Local Government Excluding Educational Services	130.5	130.2	127.4	0.3	3.1	0.23	2.43

p = Preliminary r = Revised

1/ Data include, on a place of work basis, all full and part-time nonagricultural wage and salary employees who worked during or received pay for, any part of the pay period which included the 12th of the month. Proprietors, self-employed persons, workers in private households and unpaid family workers are excluded. Estimates adjusted to a 2024 benchmark, based on the North American Industry Classification System (NAICS), 2022. Totals may not add due to rounding.

NONAGRICULTURAL WAGE AND SALARY EMPLOYMENT IN ALABAMA 1/ (in thousands)

INDUSTRY	Not Seasonally Adjusted			Seasonally Adjusted ^{3/}		
	Jul p 2025	Jun r 2025	Jul r 2024	Jul p 2025	Jun r 2025	Jul r 2024
Total Nonfarm^{2/}	2211.2	2219.5	2182.5	2214.5	2211.1	2189.7
Total Private	1798.4	1797.3	1774.8	1793.0	1790.0	1773.3
Goods Producing	407.5	408.3	401.9	406.6	406.3	401.3
Mining and Logging	9.3	9.1	9.5	9.3	9.2	9.5
Construction	108.9	109.3	107.5	108.8	108.8	107.4
Manufacturing	289.3	289.9	284.9	288.5	288.3	284.4
Service Providing	1803.7	1811.2	1780.6	1807.9	1804.8	1788.4
Private Service Providing	1390.9	1389.0	1372.9	1386.4	1383.7	1372.0
Trade, Transportation, and Utilities	410.7	410.7	408.3	412.0	412.0	409.9
Wholesale Trade	79.2	79.0	80.0	79.1	79.0	79.9
Retail Trade	241.9	242.5	238.6	242.4	242.7	239.3
Transportation, Warehousing, and Utilities	89.6	89.2	89.7	90.5	90.3	90.7
Information	22.9	23.2	22.9	22.9	23.0	22.7
Financial Activities	103.4	103.2	105.0	103.3	103.0	104.5
Finance and Insurance	74.9	75.1	76.4	74.9	75.1	76.3
Real Estate and Rental and Leasing	28.5	28.1	28.6	28.4	27.9	28.2
Professional and Business Services	261.2	260.7	260.4	263.6	262.4	262.3
Professional, Scientific, and Tech Services	130.0	129.5	126.3	130.2	130.2	126.1
Management of Companies and Enterprises	18.0	18.0	17.5	17.8	17.7	17.3
Admin, Supp & Waste Manage & Remed Services	113.2	113.2	116.6	115.6	114.5	118.9
Private Education and Health Services	271.8	270.3	261.7	273.2	271.6	263.5
Private Educational Services	30.0	30.0	29.4	31.9	31.7	32.0
Health Care and Social Assistance	241.8	240.3	232.3	241.3	239.9	231.5
Leisure and Hospitality	219.8	219.5	215.2	210.8	210.8	209.8
Arts, Entertainment, and Recreation	25.5	25.3	26.0	22.6	22.6	22.9
Accommodation and Food Services	194.3	194.2	189.2	188.2	188.2	186.9
Other Services	101.1	101.4	99.4	100.6	100.9	99.3
Government	412.8	422.2	407.7	421.5	421.1	416.4
Federal Government	57.2	57.3	58.1	57.4	57.5	58.2
State Government	131.6	131.7	129.0	133.9	133.6	131.1
Local Government	224.0	233.2	220.6	230.2	230.0	227.1

METROPOLITAN STATISTICAL AREAS Total Nonfarm Employment	Not Seasonally Adjusted			Seasonally Adjusted		
	Jul p 2025	Jun r 2025	Jul r 2024	Jul p 2025	Jun r 2025	Jul r 2024
Anniston-Oxford	47.3	47.5	46.6	47.4	47.5	46.8
Auburn-Opelika	80.6	80.8	78.5	81.1	81.0	79.3
Birmingham	572.9	573.8	570.6	571.9	571.1	569.9
Daphne-Fairhope-Foley	91.9	92.5	92.4	90.4	90.4	90.4
Decatur	62.8	63.3	61.5	62.9	62.8	61.7
Dothan	63.3	63.6	63.1	63.3	63.3	63.1
Florence-Muscle Shoals	60.2	60.4	58.8	60.4	60.4	59.2
Gadsden	35.4	35.8	34.7	35.6	35.6	34.9
Huntsville	290.5	292.0	284.2	291.1	291.6	285.8
Mobile	193.6	194.0	189.7	194.3	193.3	190.5
Montgomery	188.2	188.4	185.3	187.8	187.5	186.1
Tuscaloosa	117.8	118.1	115.3	118.7	118.6	116.9

p= Preliminary r= Revised

1/ Nonagricultural wage and salary employment estimates prepared by the United States Department of Labor. Data estimated on place of work basis and seasonally adjusted by use of the Bureau of Labor Statistics X-12 Seasonal Adjustment method.

2/ Total Nonfarm employment may not equal sum of data in seasonally adjusted columns due to some series not being seasonally adjusted.

3/ A 3-month average of seasonally adjusted over-the-month change is available at www.bls.gov/sae/tables/state-news-

HOURS AND EARNINGS DATA FOR SELECTED NONAGRICULTURAL INDUSTRIES IN ALABAMA^{1/}

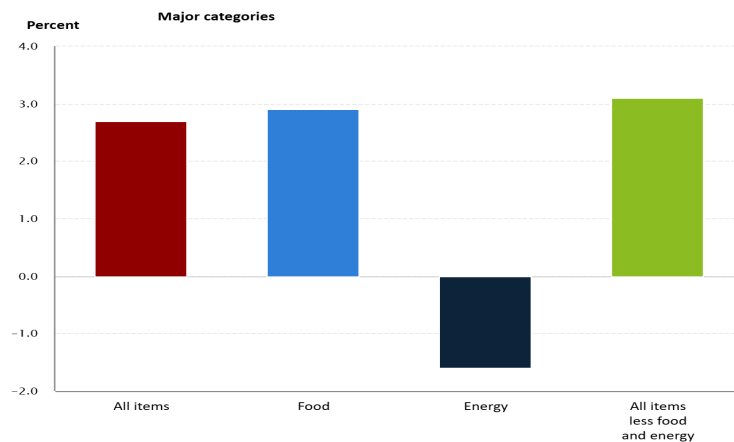
STATEWIDE INDUSTRY	All Employees (in thousands)			Average Weekly Earnings			Average Weekly Hours			Average Hourly Earnings		
	Jul p 2025	Jun r 2025	Jul r 2024	Jul p 2025	Jun r 2025	Jul r 2024	Jul p 2025	Jun r 2025	Jul r 2024	Jul p 2025	Jun r 2025	Jul r 2024
Total Private	1,798.4	1,797.3	1,774.8	\$1,103.77	\$1,119.20	\$1,036.73	35.4	35.7	34.5	\$31.18	\$31.35	\$30.05
Goods Producing	407.5	408.3	401.9	\$1,334.75	\$1,332.10	\$1,243.98	42.4	42.6	40.6	\$31.48	\$31.27	\$30.64
Construction	108.9	109.3	107.5	\$1,378.63	\$1,363.63	\$1,305.59	43.6	43.4	41.5	\$31.62	\$31.42	\$31.46
Manufacturing	289.3	289.9	284.9	\$1,318.04	\$1,332.25	\$1,235.75	41.5	42.2	40.2	\$31.76	\$31.57	\$30.74
Private Service Providing	1,390.9	1,389.0	1,372.9	\$1,037.74	\$1,057.84	\$975.77	33.4	33.7	32.7	\$31.07	\$31.39	\$29.84
Trade, Transportation, and Utilities	410.7	410.7	408.3	\$940.21	\$961.25	\$869.44	33.4	33.4	32.6	\$28.15	\$28.78	\$26.67
Financial Activities	103.4	103.2	105.0	\$1,292.04	\$1,322.02	\$1,243.65	37.0	38.0	36.1	\$34.92	\$34.79	\$34.45
Professional and Business Services	261.2	260.7	260.4	\$1,375.95	\$1,417.13	\$1,316.19	36.8	37.5	36.5	\$37.39	\$37.79	\$36.06
Private Education and Health Services	271.8	270.3	261.7	\$1,020.39	\$1,034.96	\$986.06	33.9	34.0	33.7	\$30.10	\$30.44	\$29.26
Leisure and Hospitality	219.8	219.5	215.2	\$446.08	\$441.73	\$413.42	24.7	24.9	24.8	\$18.06	\$17.74	\$16.67
Other Services	101.1	101.4	99.4	\$820.50	\$875.03	\$894.53	30.0	30.8	31.8	\$27.35	\$28.41	\$28.13
MANUFACTURING: PRODUCTION WORKERS	Production Workers (in thousands)			Average Weekly Earnings			Average Weekly Hours			Average Hourly Earnings		
	Jul p 2025	Jun r 2025	Jul r 2024	Jul p 2025	Jun r 2025	Jul r 2024	Jul p 2025	Jun r 2025	Jul r 2024	Jul p 2025	Jun r 2025	Jul r 2024
Manufacturing	213.1	211.6	200.2	\$1,097.26	\$1,108.11	\$990.22	42.3	42.9	40.8	\$25.94	\$25.83	\$24.27
Durable Goods	138.3	137.4	133.3	\$1,094.34	\$1,119.31	\$980.50	42.4	43.3	40.3	\$25.81	\$25.85	\$24.33
Non-Durable Goods	74.8	74.2	66.9	\$1,099.98	\$1,085.76	\$1,006.64	42.0	42.1	41.7	\$26.19	\$25.79	\$24.14
METROPOLITAN STATISTICAL AREAS	All Employees (in thousands)			Average Weekly Earnings			Average Weekly Hours			Average Hourly Earnings		
	Jul p 2025	Jun r 2025	Jul r 2024	Jul p 2025	Jun r 2025	Jul r 2024	Jul p 2025	Jun r 2025	Jul r 2024	Jul p 2025	Jun r 2025	Jul r 2024
Anniston-Oxford	47.3	47.5	46.6	\$766.93	\$761.21	\$753.03	33.1	32.6	32.5	\$23.17	\$23.35	\$23.17
Auburn-Opelika	80.6	80.8	78.5	\$793.35	\$795.32	\$749.02	31.9	31.8	30.9	\$24.87	\$25.01	\$24.24
Birmingham	572.9	573.8	570.6	\$1,146.11	\$1,157.66	\$1,055.59	35.2	35.5	33.5	\$32.56	\$32.61	\$31.51
Daphne-Fairhope-Foley	91.9	92.5	92.4	\$879.42	\$883.76	\$842.08	32.9	33.4	32.5	\$26.73	\$26.46	\$25.91
Decatur	62.8	63.3	61.5	\$1,162.02	\$1,186.65	\$1,023.20	37.4	37.9	36.7	\$31.07	\$31.31	\$27.88
Dothan	63.3	63.6	63.1	\$805.41	\$811.98	\$756.36	34.2	34.7	33.0	\$23.55	\$23.40	\$22.92
Florence-Muscle Shoals	60.2	60.4	58.8	\$911.88	\$905.34	\$829.73	36.0	35.2	32.5	\$25.33	\$25.72	\$25.53
Gadsden	35.4	35.8	34.7	\$834.55	\$831.79	\$813.97	34.6	34.4	34.1	\$24.12	\$24.18	\$23.87
Huntsville	290.5	292.0	284.2	\$1,369.03	\$1,389.37	\$1,337.72	34.8	34.9	34.9	\$39.34	\$39.81	\$38.33
Mobile	193.6	194.0	189.7	\$1,093.63	\$1,138.43	\$1,030.30	35.6	36.7	35.7	\$30.72	\$31.02	\$28.86
Montgomery	188.2	188.4	185.3	\$1,082.30	\$1,080.80	\$987.91	35.3	35.8	34.7	\$30.66	\$30.19	\$28.47
Tuscaloosa	117.8	118.1	115.3	\$959.76	\$976.84	\$880.46	34.4	34.8	33.1	\$27.90	\$28.07	\$26.60

p = Preliminary r = Revised

^{1/} Estimates, computed on a gross basis, do not represent straight time earnings or standard workweek.

Consumer Price Index

12-month percentage change, Consumer Price Index, selected categories, July 2025, not seasonally adjusted

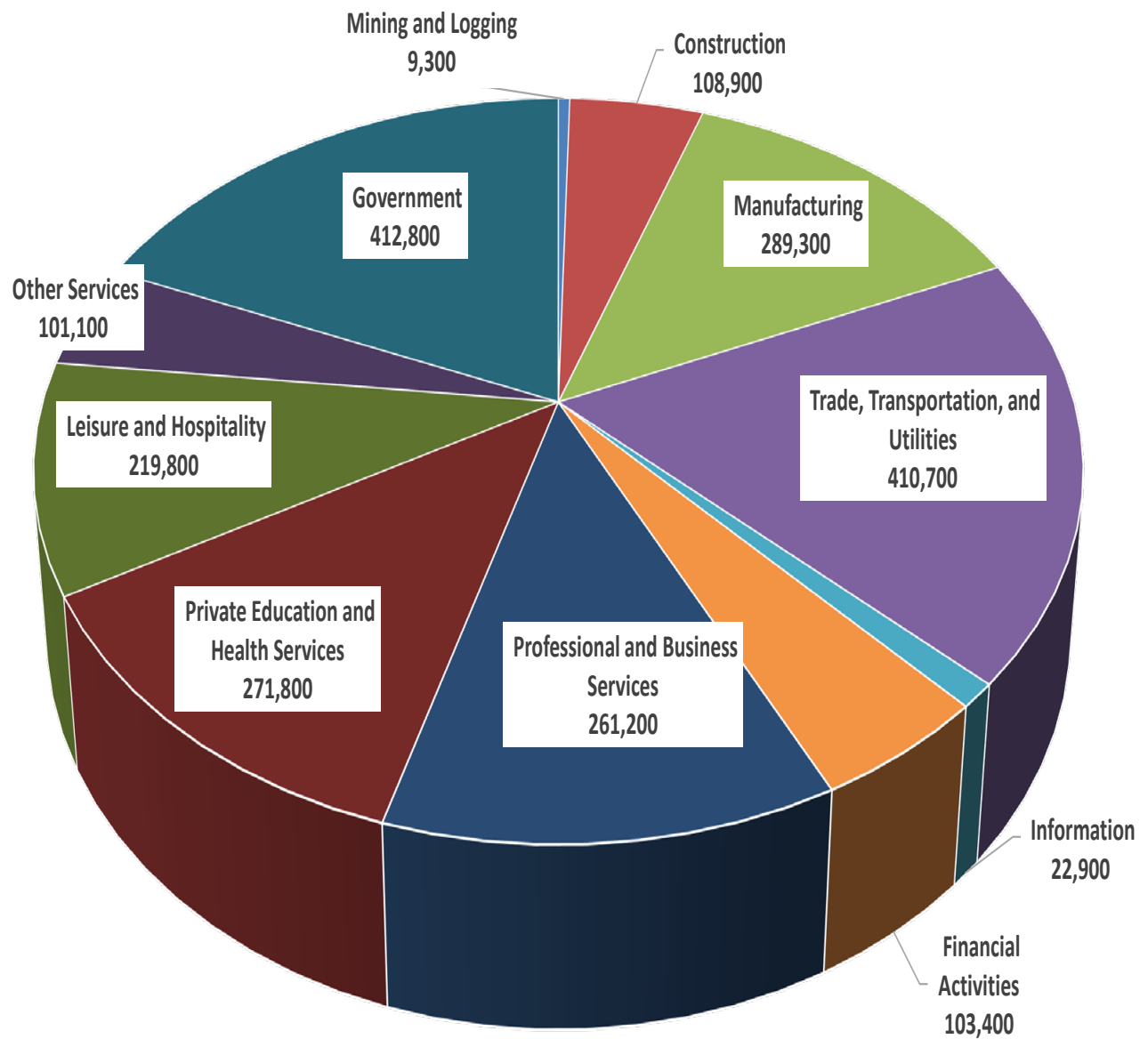


The Consumer Price Index for All Urban Consumers (CPI-U) increased 2.7 percent over the last 12 months to an index level of 323.048 (1982-84=100). For July the index increased 0.2 percent prior to seasonal adjustment.

The Consumer Price Index for Urban Wage Earners and Clerical Workers (CPI-W) increased 2.5 percent over the last 12 months to an index level of 316.349 (1982-84=100). For July, the index increased 0.1 percent prior to seasonal adjustment.

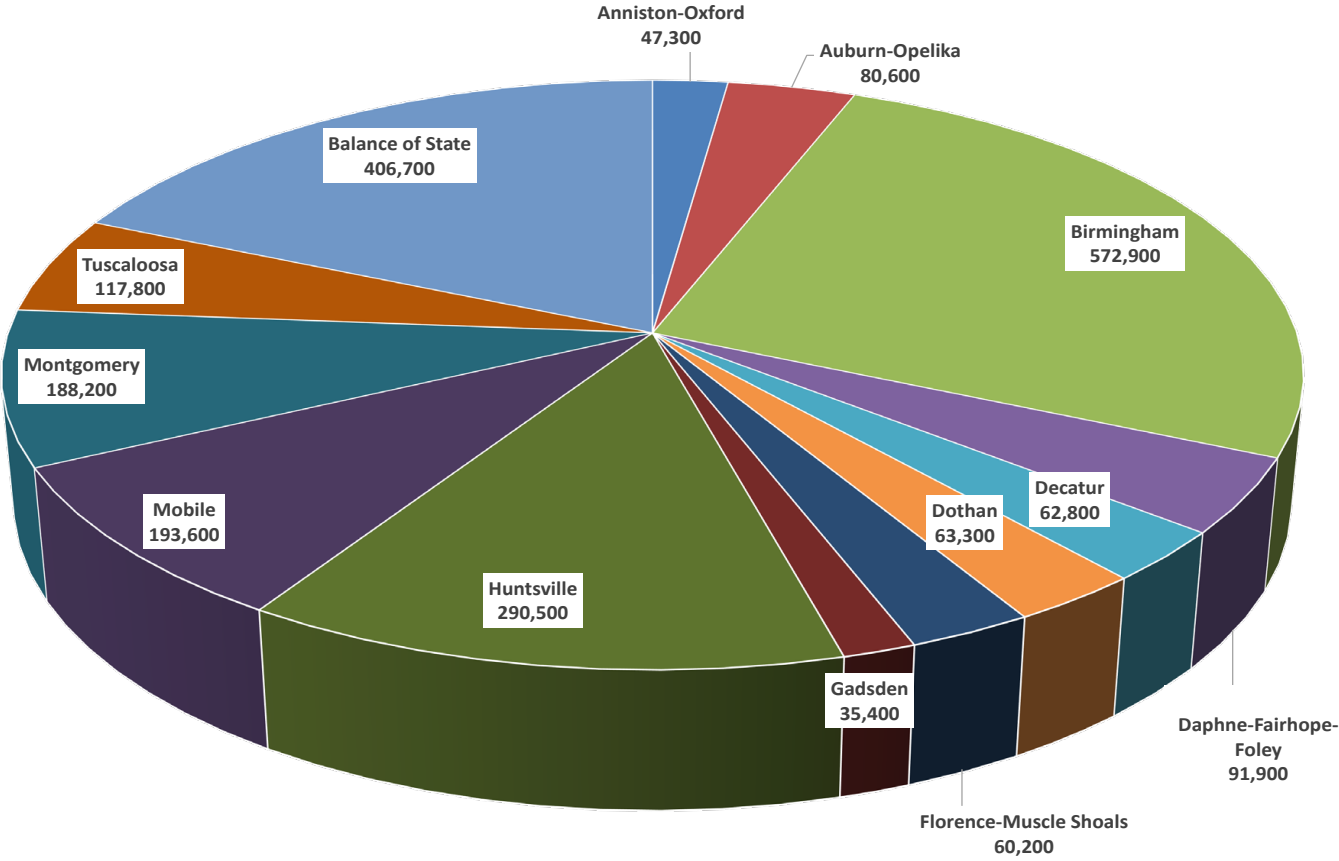
For further details visit the CPI homepage online at <http://www.bls.gov/cpi/> or contact the CPI Information Office at (202) 691-7000.

Alabama July 2025 Preliminary
Current Employment Statistics
Statewide Employment by Industry Sector



Estimates prepared by the U.S. Department of Labor, Bureau of Labor Statistics and adjusted to a 2024 benchmark, based on the North American Industry Classification System (NAICS), 2022.

Alabama July 2025 Preliminary
Current Employment Statistics
Statewide Employment by Geography



Estimates prepared by the U.S. Department of Labor, Bureau of Labor Statistics and adjusted to a 2024 benchmark, based on the North American Industry Classification System (NAICS), 2022.

**NONAGRICULTURAL WAGE AND SALARY EMPLOYMENT
FOR ALABAMA METROPOLITAN STATISTICAL AREAS (MSA'S)^{1/}**

<u>ANNISTON-OXFORD MSA</u>	Jul p 2025	Jun r 2025	Jul r 2024	Net Change From :	
				Jun r 2025	Jul r 2024
TOTAL NONAGRICULTURAL EMPLOYMENT	47,300	47,500	46,600	-200	700
GOODS PRODUCING	8,200	8,200	8,000	0	200
Mining, Logging, and Construction	1,400	1,400	1,300	0	100
Manufacturing	6,800	6,800	6,700	0	100
SERVICE PROVIDING	39,100	39,300	38,600	-200	500
Trade, Transportation, and Utilities	9,100	9,000	9,200	100	-100
Wholesale Trade	1,800	1,800	1,800	0	0
Retail Trade	6,000	5,900	6,000	100	0
Transportation, Warehousing and Utilities	1,300	1,300	1,400	0	-100
Information	300	300	300	0	0
Financial Activities	1,400	1,400	1,400	0	0
Professional and Business Services	3,800	3,800	3,800	0	0
Private Education and Health Services	4,600	4,700	4,500	-100	100
Leisure and Hospitality	5,400	5,400	5,200	0	200
Other Services	1,900	1,900	1,800	0	100
Government	12,600	12,800	12,400	-200	200
Federal	3,600	3,600	3,400	0	200
State and Local	9,000	9,200	9,000	-200	0

1 Place of work basis. p Preliminary. r Revised.

NOTE: Estimates prepared by the U.S. Department of Labor, Bureau of Labor Statistics.

Estimates adjusted to a 2024 benchmark. Based on the North American Industry Classification System (NAICS), 2022.

<u>AUBURN-OPELIKA MSA</u>	Jul p 2025	Jun r 2025	Jul r 2024	Net Change From :	
				Jun r 2025	Jul r 2024
TOTAL NONAGRICULTURAL EMPLOYMENT	80,600	80,800	78,500	-200	2,100
GOODS PRODUCING	11,500	11,500	11,400	0	100
Mining, Logging, and Construction	3,700	3,700	3,700	0	0
Manufacturing	7,800	7,800	7,700	0	100
SERVICE PROVIDING	69,100	69,300	67,100	-200	2,000
Trade, Transportation, and Utilities	13,300	13,200	13,400	100	-100
Wholesale Trade	1,500	1,500	1,600	0	-100
Retail Trade	8,600	8,500	8,300	100	300
Transportation, Warehousing and Utilities	3,200	3,200	3,500	0	-300
Information	900	900	900	0	0
Financial Activities	2,600	2,600	2,600	0	0
Professional and Business Services	8,900	8,900	8,500	0	400
Private Education and Health Services	6,300	6,400	6,000	-100	300
Leisure and Hospitality	10,700	10,600	9,600	100	1,100
Other Services	2,800	2,800	2,700	0	100
Government	23,600	23,900	23,400	-300	200
Federal	1,300	1,300	1,300	0	0
State and Local	22,300	22,600	22,100	-300	200

1 Place of work basis. p Preliminary. r Revised.

NOTE: Estimates prepared by the U.S. Department of Labor, Bureau of Labor Statistics.

Estimates adjusted to a 2024 benchmark. Based on the North American Industry Classification System (NAICS), 2022.

**NONAGRICULTURAL WAGE AND SALARY EMPLOYMENT
FOR ALABAMA METROPOLITAN STATISTICAL AREAS (MSA'S)^{1/}**

<u>BIRMINGHAM MSA</u>	Jul p 2025	Jun r 2025	Jul r 2024	Net Change From :	
				Jun r 2025	Jul r 2024
TOTAL NONAGRICULTURAL EMPLOYMENT	572,900	573,800	570,600	-900	2,300
GOODS PRODUCING	74,400	74,400	74,300	0	100
Mining and Logging	2,500	2,500	2,500	0	0
Construction	31,000	30,800	31,400	200	-400
Specialty Trade Contractors	18,200	18,200	18,700	0	-500
Manufacturing	40,900	41,100	40,400	-200	500
Durable Goods	28,800	28,900	28,700	-100	100
Primary Metal Manufacturing	5,300	5,300	5,200	0	100
Nondurable Goods	12,100	12,200	11,700	-100	400
Food Manufacturing	4,100	4,200	4,000	-100	100
SERVICE PROVIDING	498,500	499,400	496,300	-900	2,200
Trade, Transportation, and Utilities	114,500	114,500	115,600	0	-1,100
Wholesale Trade	28,200	28,100	29,000	100	-800
Merchant Wholesalers	14,700	14,700	14,700	0	0
Retail Trade	58,800	58,900	58,400	-100	400
General Merchandise Retailers	14,500	14,500	14,200	0	300
Transportation, Warehousing and Utilities	27,500	27,500	28,200	0	-700
Utilities	6,100	6,100	6,300	0	-200
Transportation and Warehousing	21,400	21,400	21,900	0	-500
Information	9,300	9,400	9,200	-100	100
Telecommunication	2,800	2,800	2,900	0	-100
Financial Activities	43,900	44,000	44,700	-100	-800
Finance and Insurance	35,500	35,600	36,100	-100	-600
Credit Intermediation and Related	14,400	14,400	14,600	0	-200
Insurance Carriers and Related	18,700	18,800	18,800	-100	-100
Professional and Business Services	73,900	73,800	73,800	100	100
Professional, Scientific and Technical Services	32,300	31,900	31,700	400	600
Management of Companies and Enterprises	9,500	9,500	9,300	0	200
Admin., Support and Waste Management	32,100	32,400	32,800	-300	-700
Private Education and Health Services	81,300	80,300	79,400	1,000	1,900
Health Care and Social Assistance	74,000	73,000	71,500	1,000	2,500
Ambulatory Healthcare	35,700	35,400	35,100	300	600
Hospitals	17,500	17,400	17,000	100	500
Leisure and Hospitality	53,900	54,000	53,100	-100	800
Food Service and Drinking Places	42,800	42,500	41,700	300	1,100
Other Services	31,900	32,000	31,400	-100	500
Government	89,800	91,400	89,100	-1,600	700
Federal	9,500	9,500	9,800	0	-300
State	35,600	35,400	35,100	200	500
Local	44,700	46,500	44,200	-1,800	500

¹ Place of work basis. p Preliminary. r Revised.

NOTE: Estimates prepared by the U.S. Department of Labor, Bureau of Labor Statistics.

Estimates adjusted to a 2024 benchmark. Based on the North American Industry Classification System (NAICS), 2022.

<u>DAPHNE-FAIRHOPE-FOLEY MSA</u>	Jul p 2025	Jun r 2025	Jul r 2024	Net Change From :	
				Jun r 2025	Jul r 2024
TOTAL NONAGRICULTURAL EMPLOYMENT	91,900	92,500	92,400	-600	-500
GOODS PRODUCING	9,800	9,800	10,400	0	-600
SERVICE PROVIDING	82,100	82,700	82,000	-600	100
Government	11,100	11,900	10,700	-800	400

¹ Place of work basis. p Preliminary. r Revised.

NOTE: Estimates prepared by the U.S. Department of Labor, Bureau of Labor Statistics.

Estimates adjusted to a 2024 benchmark. Based on the North American Industry Classification System (NAICS), 2022.

**NONAGRICULTURAL WAGE AND SALARY EMPLOYMENT
FOR ALABAMA METROPOLITAN STATISTICAL AREAS (MSA'S)^{1/}**

<u>DECATUR MSA</u>	Jul p 2025	Jun r 2025	Jul r 2024	Net Change From :	
				Jun r 2025	Jul r 2024
TOTAL NONAGRICULTURAL EMPLOYMENT	62,800	63,300	61,500	-500	1,300
GOODS PRODUCING	19,600	19,600	19,200	0	400
Mining, Logging, and Construction	4,800	4,800	4,700	0	100
Manufacturing	14,800	14,800	14,500	0	300
Durable Goods	8,500	8,500	8,300	0	200
Nondurable Goods	6,300	6,300	6,200	0	100
SERVICE PROVIDING	43,200	43,700	42,300	-500	900
Trade, Transportation, and Utilities	11,000	11,100	10,900	-100	100
Wholesale Trade	2,500	2,500	2,500	0	0
Retail Trade	6,600	6,700	6,500	-100	100
Transportation, Warehousing and Utilities	1,900	1,900	1,900	0	0
Information	400	400	400	0	0
Financial Activities	2,300	2,300	2,300	0	0
Professional and Business Services	6,800	6,800	6,900	0	-100
Private Education and Health Services	5,400	5,400	5,200	0	200
Leisure and Hospitality	5,500	5,400	5,300	100	200
Other Services	2,500	2,500	2,500	0	0
Government	9,300	9,800	8,800	-500	500
Federal	400	400	400	0	0
State and Local	8,900	9,400	8,400	-500	500

1 Place of work basis. p Preliminary. r Revised.

NOTE: Estimates prepared by the U.S. Department of Labor, Bureau of Labor Statistics.

Estimates adjusted to a 2024 benchmark. Based on the North American Industry Classification System (NAICS), 2022.

<u>DOTHAN MSA</u>	Jul p 2025	Jun r 2025	Jul r 2024	Net Change From :	
				Jun r 2025	Jul r 2024
TOTAL NONAGRICULTURAL EMPLOYMENT	63,300	63,600	63,100	-300	200
GOODS PRODUCING	8,700	8,700	8,600	0	100
Mining, Logging, and Construction	2,900	2,900	2,900	0	0
Manufacturing	5,800	5,800	5,700	0	100
SERVICE PROVIDING	54,600	54,900	54,500	-300	100
Trade, Transportation, and Utilities	15,900	16,000	16,000	-100	-100
Wholesale Trade	3,300	3,300	3,300	0	0
Retail Trade	9,300	9,400	9,200	-100	100
Transportation, Warehousing and Utilities	3,300	3,300	3,500	0	-200
Information	400	400	400	0	0
Financial Activities	2,100	2,100	2,200	0	-100
Professional and Business Services	5,700	5,700	6,100	0	-400
Private Education and Health Services	9,800	9,800	9,500	0	300
Leisure and Hospitality	6,800	6,800	6,700	0	100
Other Services	2,700	2,700	2,700	0	0
Government	11,200	11,400	10,900	-200	300
Federal	400	400	400	0	0
State and Local	10,800	11,000	10,500	-200	300

1 Place of work basis. p Preliminary. r Revised.

NOTE: Estimates prepared by the U.S. Department of Labor, Bureau of Labor Statistics.

Estimates adjusted to a 2024 benchmark. Based on the North American Industry Classification System (NAICS), 2022.

**NONAGRICULTURAL WAGE AND SALARY EMPLOYMENT
FOR ALABAMA METROPOLITAN STATISTICAL AREAS (MSA'S)^{1/}**

<u>FLORENCE - MUSCLE SHOALS MSA</u>	Jul p 2025	Jun r 2025	Jul r 2024	Net Change From :	
				Jun r 2025	Jul r 2024
TOTAL NONAGRICULTURAL EMPLOYMENT	60,200	60,400	58,800	-200	1,400
GOODS PRODUCING	13,100	13,100	12,900	0	200
Mining, Logging, and Construction	4,300	4,300	4,100	0	200
Manufacturing	8,800	8,800	8,800	0	0
SERVICE PROVIDING	47,100	47,300	45,900	-200	1,200
Trade, Transportation, and Utilities	11,900	11,800	11,700	100	200
Wholesale Trade	2,300	2,300	2,400	0	-100
Retail Trade	8,300	8,200	8,100	100	200
Transportation, Warehousing and Utilities	1,300	1,300	1,200	0	100
Information	500	500	500	0	0
Financial Activities	2,600	2,600	2,600	0	0
Professional and Business Services	3,300	3,400	3,300	-100	0
Private Education and Health Services	8,200	8,200	7,700	0	500
Leisure and Hospitality	7,400	7,300	7,100	100	300
Other Services	2,500	2,500	2,400	0	100
Government	10,700	11,000	10,600	-300	100
Federal	1,000	1,000	1,000	0	0
State and Local	9,700	10,000	9,600	-300	100

¹ Place of work basis. p Preliminary. r Revised.

NOTE: Estimates prepared by the U.S. Department of Labor, Bureau of Labor Statistics.

Estimates adjusted to a 2024 benchmark. Based on the North American Industry Classification System (NAICS), 2022.

<u>GADSDEN MSA</u>	Jul p 2025	Jun r 2025	Jul r 2024	Net Change From :	
				Jun r 2025	Jul r 2024
TOTAL NONAGRICULTURAL EMPLOYMENT	35,400	35,800	34,700	-400	700
GOODS PRODUCING	5,900	5,900	5,600	0	300
Mining, Logging, and Construction	1,200	1,200	1,200	0	0
Manufacturing	4,700	4,700	4,400	0	300
SERVICE PROVIDING	29,500	29,900	29,100	-400	400
Trade, Transportation, and Utilities	6,900	6,900	6,700	0	200
Wholesale Trade	1,000	1,000	1,000	0	0
Retail Trade	4,900	4,900	4,700	0	200
Transportation, Warehousing and Utilities	1,000	1,000	1,000	0	0
Information	200	200	200	0	0
Financial Activities	1,300	1,300	1,300	0	0
Professional and Business Services	2,700	2,700	2,800	0	-100
Private Education and Health Services	7,800	7,800	7,600	0	200
Leisure and Hospitality	4,200	4,200	4,000	0	200
Other Services	1,500	1,500	1,500	0	0
Government	4,900	5,300	5,000	-400	-100
Federal	300	300	300	0	0
State and Local	4,600	5,000	4,700	-400	-100

¹ Place of work basis. p Preliminary. r Revised.

NOTE: Estimates prepared by the U.S. Department of Labor, Bureau of Labor Statistics.

Estimates adjusted to a 2024 benchmark. Based on the North American Industry Classification System (NAICS), 2022.

NONAGRICULTURAL WAGE AND SALARY EMPLOYMENT FOR ALABAMA METROPOLITAN STATISTICAL AREAS (MSA'S)^{1/}

<u>HUNTSVILLE MSA</u>	Jul p 2025	Jun r 2025	Jul r 2024	Net Change From :	
				Jun r 2025	Jul r 2024
TOTAL NONAGRICULTURAL EMPLOYMENT	290,500	292,000	284,200	-1,500	6,300
GOODS PRODUCING	47,700	47,600	46,900	100	800
Mining, Logging, and Construction	11,800	11,700	11,300	100	500
Manufacturing	35,900	35,900	35,600	0	300
Durable Goods	31,700	31,700	31,500	0	200
Computer and Electronic Prod. Manufacturing	3,500	3,500	3,500	0	0
Transportation Equipment Manufacturing	20,000	20,100	19,900	-100	100
Nondurable Goods	4,200	4,200	4,100	0	100
SERVICE PROVIDING	242,800	244,400	237,300	-1,600	5,500
Trade, Transportation, and Utilities	41,300	41,200	40,300	100	1,000
Wholesale Trade	7,200	7,200	7,200	0	0
Retail Trade	28,200	28,300	27,300	-100	900
General Merchandise Retailers	8,100	8,100	7,800	0	300
Transportation, Warehousing and Utilities	5,900	5,700	5,800	200	100
Information	2,700	2,800	2,700	-100	0
Financial Activities	9,100	9,000	9,100	100	0
Professional and Business Services	68,300	68,700	67,100	-400	1,200
Professional, Scientific and Technical Services	52,600	52,400	51,300	200	1,300
Private Education and Health Services	26,300	26,400	24,900	-100	1,400
Leisure and Hospitality	26,200	25,800	25,600	400	600
Food Services and Drinking Places	20,800	20,500	19,800	300	1,000
Other Services	9,800	9,800	9,400	0	400
Government	59,100	60,700	58,200	-1,600	900
Federal	21,400	21,500	21,400	-100	0
State	8,500	8,700	8,200	-200	300
Local	29,200	30,500	28,600	-1,300	600

¹ Place of work basis. p Preliminary. r Revised.

NOTE: Estimates prepared by the U.S. Department of Labor, Bureau of Labor Statistics.

Estimates adjusted to a 2024 benchmark. Based on the North American Industry Classification System (NAICS), 2022.

<u>MOBILE MSA</u>	Jul p 2025	Jun r 2025	Jul r 2024	Net Change From :	
				Jun r 2025	Jul r 2024
TOTAL NONAGRICULTURAL EMPLOYMENT	193,600	194,000	189,700	-400	3,900
GOODS PRODUCING	32,100	32,000	31,200	100	900
Mining, Logging, and Construction	14,600	14,700	14,100	-100	500
Manufacturing	17,500	17,300	17,100	200	400
SERVICE PROVIDING	161,500	162,000	158,500	-500	3,000
Trade, Transportation, and Utilities	39,600	39,700	39,200	-100	400
Wholesale Trade	8,500	8,500	8,500	0	0
Retail Trade	20,200	20,200	19,400	0	800
General Merchandise Retailers	5,200	5,200	4,900	0	300
Transportation, Warehousing and Utilities	10,900	11,000	11,300	-100	-400
Information	2,200	2,200	2,200	0	0
Financial Activities	8,000	7,900	8,800	100	-800
Professional and Business Services	22,900	22,200	21,800	700	1,100
Private Education and Health Services	30,000	30,100	28,900	-100	1,100
Health Care and Social Assistance	26,400	26,500	25,400	-100	1,000
Leisure and Hospitality	18,000	18,000	17,600	0	400
Food Services and Drinking Places	14,600	14,600	14,400	0	200
Other Services	11,400	11,400	11,200	0	200
Government	29,400	30,500	28,800	-1,100	600
Federal	2,900	2,900	3,000	0	-100
State	11,700	11,700	11,200	0	500
Local	14,800	15,900	14,600	-1,100	200

¹ Place of work basis. p Preliminary. r Revised.

NOTE: Estimates prepared by the U.S. Department of Labor, Bureau of Labor Statistics.

Estimates adjusted to a 2024 benchmark. Based on the North American Industry Classification System (NAICS), 2022.

**NONAGRICULTURAL WAGE AND SALARY EMPLOYMENT
FOR ALABAMA METROPOLITAN STATISTICAL AREAS (MSA'S)1/**

<u>MONTGOMERY MSA</u>	Jul p 2025	Jun r 2025	Jul r 2024	Net Change From :	
				Jun r 2025	Jul r 2024
TOTAL NONAGRICULTURAL EMPLOYMENT	188,200	188,400	185,300	-200	2,900
GOODS PRODUCING	28,400	28,600	28,200	-200	200
Mining, Logging, and Construction	7,600	7,700	7,700	-100	-100
Manufacturing	20,800	20,900	20,500	-100	300
SERVICE PROVIDING	159,800	159,800	157,100	0	2,700
Trade, Transportation, and Utilities	30,900	31,100	30,400	-200	500
Wholesale Trade	6,200	6,200	6,200	0	0
Retail Trade	17,900	18,100	17,600	-200	300
General Merchandise Retailers	5,000	5,000	4,900	0	100
Transportation, Warehousing and Utilities	6,800	6,800	6,600	0	200
Information	1,800	1,800	1,800	0	0
Financial Activities	8,800	8,800	8,600	0	200
Finance and Insurance	6,300	6,300	6,100	0	200
Professional and Business Services	21,100	21,300	21,400	-200	-300
Private Education and Health Services	21,600	21,600	20,700	0	900
Health Care and Social Assistance	17,100	17,000	16,400	100	700
Leisure and Hospitality	18,600	18,300	17,900	300	700
Food Services and Drinking Places	13,900	13,800	13,600	100	300
Other Services	9,700	9,700	9,500	0	200
Government	47,300	47,200	46,800	100	500
Federal	7,900	7,800	8,100	100	-200
State	25,000	25,000	24,600	0	400
Local	14,400	14,400	14,100	0	300

1 Place of work basis. p Preliminary. r Revised.

NOTE: Estimates prepared by the U.S. Department of Labor, Bureau of Labor Statistics.

Estimates adjusted to a 2024 benchmark. Based on the North American Industry Classification System (NAICS), 2022.

<u>TUSCALOOSA MSA</u>	Jul p 2025	Jun r 2025	Jul r 2024	Net Change From :	
				Jun r 2025	Jul r 2024
TOTAL NONAGRICULTURAL EMPLOYMENT	117,800	118,100	115,300	-300	2,500
GOODS PRODUCING	27,400	27,400	27,600	0	-200
Mining, Logging, and Construction	7,600	7,600	7,500	0	100
Manufacturing	19,800	19,800	20,100	0	-300
SERVICE PROVIDING	90,400	90,700	87,700	-300	2,700
Trade, Transportation, and Utilities	17,900	17,800	17,700	100	200
Wholesale Trade	2,400	2,400	2,400	0	0
Retail Trade	11,900	11,800	11,600	100	300
Transportation, Warehousing and Utilities	3,600	3,600	3,700	0	-100
Information	800	800	800	0	0
Financial Activities	4,000	4,000	4,000	0	0
Professional and Business Services	9,900	9,900	9,900	0	0
Private Education and Health Services	10,900	11,000	10,400	-100	500
Leisure and Hospitality	12,600	12,400	11,200	200	1,400
Other Services	4,400	4,400	4,200	0	200
Government	29,900	30,400	29,500	-500	400
Federal	2,200	2,200	2,200	0	0
State	15,100	15,000	14,200	100	900
Local	12,600	13,200	13,100	-600	-500

1 Place of work basis. p Preliminary. r Revised.

NOTE: Estimates prepared by the U.S. Department of Labor, Bureau of Labor Statistics.

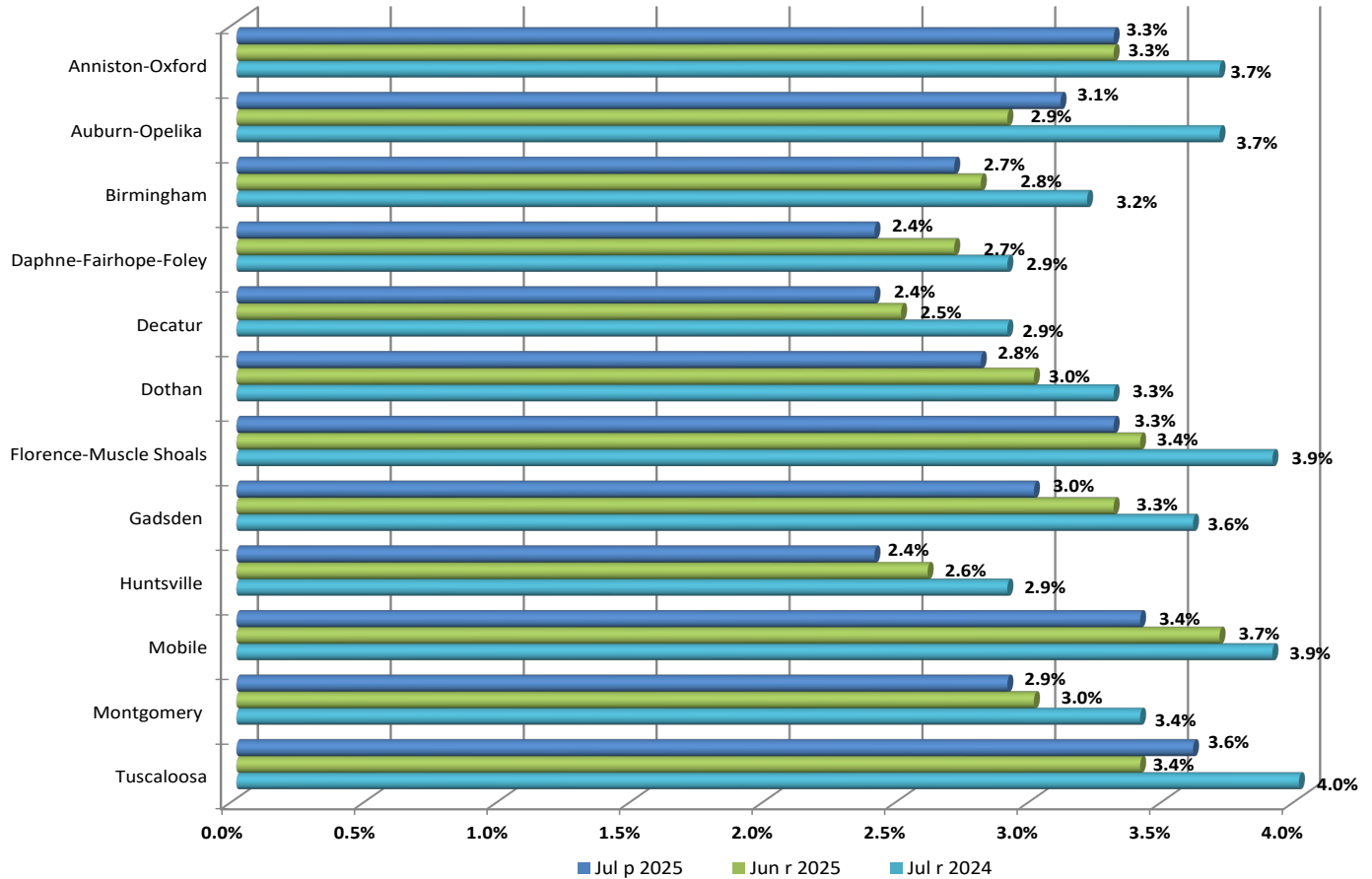
Estimates adjusted to a 2024 benchmark. Based on the North American Industry Classification System (NAICS), 2022.

ALABAMA, U.S., & COUNTY AREA CIVILIAN LABOR FORCE DATA

Area	Civilian Labor Force			Employment			Unemployment			Unemployment Rate		
	Jul p 2025	Jun r 2025	Jul r 2024	Jul p 2025	Jun r 2025	Jul r 2024	Jul p 2025	Jun r 2025	Jul r 2024	Jul p 2025	Jun r 2025	Jul r 2024
Alabama (Seasonally Adjusted)	2,383,940	2,386,087	2,348,866	2,311,434	2,310,447	2,277,558	72,506	75,640	71,308	3.0%	3.2%	3.0%
Alabama (Not Seasonally Adjusted)	2,378,517	2,387,447	2,362,412	2,308,918	2,314,664	2,281,028	69,599	72,783	81,384	2.9%	3.0%	3.4%
Autauga	28,900	28,985	28,591	28,210	28,243	27,720	690	742	871	2.4%	2.6%	3.0%
Baldwin	118,698	119,482	119,577	115,824	116,287	116,087	2,874	3,195	3,490	2.4%	2.7%	2.9%
Barbour	8,625	8,649	8,861	8,307	8,304	8,471	318	345	390	3.7%	4.0%	4.4%
Bibb	8,792	8,826	8,795	8,561	8,562	8,497	231	264	298	2.6%	3.0%	3.4%
Blount	27,183	27,205	27,263	26,551	26,526	26,471	632	679	792	2.3%	2.5%	2.9%
Bullock	4,099	4,097	4,209	3,945	3,946	4,010	154	151	199	3.8%	3.7%	4.7%
Butler	8,042	8,068	8,081	7,756	7,767	7,720	286	301	361	3.6%	3.7%	4.5%
Calhoun	50,491	50,484	49,862	48,813	48,799	48,040	1,678	1,685	1,822	3.3%	3.3%	3.7%
Chambers	18,561	18,463	18,204	18,001	17,939	17,602	560	524	602	3.0%	2.8%	3.3%
Cherokee	10,551	10,673	10,340	10,237	10,346	9,986	314	327	354	3.0%	3.1%	3.4%
Chilton	20,308	20,346	20,361	19,784	19,776	19,701	524	570	660	2.6%	2.8%	3.2%
Choctaw	4,123	4,186	4,213	3,960	4,000	4,008	163	186	205	4.0%	4.4%	4.9%
Clarke	7,918	7,983	8,418	7,521	7,574	7,936	397	409	482	5.0%	5.1%	5.7%
Clay	5,914	5,969	5,965	5,761	5,790	5,764	153	179	201	2.6%	3.0%	3.4%
Cleburne	6,567	6,552	6,485	6,403	6,375	6,275	164	177	210	2.5%	2.7%	3.2%
Coffee	23,963	24,024	23,867	23,291	23,306	23,063	672	718	804	2.8%	3.0%	3.4%
Colbert	26,423	26,554	25,929	25,565	25,615	24,970	858	939	959	3.2%	3.5%	3.7%
Conecuh	4,033	4,024	4,012	3,863	3,842	3,826	170	182	186	4.2%	4.5%	4.6%
Coosa	4,393	4,446	4,391	4,270	4,304	4,217	123	142	174	2.8%	3.2%	4.0%
Covington	15,285	15,354	15,215	14,781	14,871	14,658	504	483	557	3.3%	3.1%	3.7%
Crenshaw	5,495	5,510	5,611	5,327	5,331	5,396	168	179	215	3.1%	3.2%	3.8%
Cullman	39,412	39,799	40,119	38,415	38,709	38,928	997	1,090	1,191	2.5%	2.7%	3.0%
Dale	19,086	19,123	19,086	18,469	18,470	18,369	617	653	717	3.2%	3.4%	3.8%
Dallas	14,517	14,704	14,541	13,826	13,970	13,651	691	734	890	4.8%	5.0%	6.1%
DeKalb	32,970	32,955	33,131	32,128	32,083	32,114	842	872	1,017	2.6%	2.6%	3.1%
Elmore	43,323	43,470	42,841	42,332	42,389	41,607	991	1,081	1,234	2.3%	2.5%	2.9%
Escambia	13,106	13,223	13,154	12,641	12,743	12,551	465	480	603	3.5%	3.6%	4.6%
Etowah	42,759	43,205	42,402	41,457	41,774	40,858	1,302	1,431	1,544	3.0%	3.3%	3.6%
Fayette	6,543	6,610	6,623	6,363	6,407	6,366	180	203	257	2.8%	3.1%	3.9%
Franklin	13,956	14,030	14,076	13,568	13,623	13,607	388	407	469	2.8%	2.9%	3.3%
Geneva	11,670	11,694	11,689	11,359	11,365	11,309	311	329	380	2.7%	2.8%	3.3%
Greene	2,374	2,400	2,365	2,236	2,240	2,200	138	160	165	5.8%	6.7%	7.0%
Hale	5,594	5,613	5,545	5,360	5,359	5,271	234	254	274	4.2%	4.5%	4.9%
Henry	8,033	8,044	8,034	7,800	7,798	7,763	233	246	271	2.9%	3.1%	3.4%
Houston	48,957	49,149	48,904	47,591	47,661	47,268	1,366	1,488	1,636	2.8%	3.0%	3.3%
Jackson	20,780	20,991	21,123	20,068	20,270	20,307	712	721	816	3.4%	3.4%	3.9%
Jefferson	324,372	324,985	323,425	314,808	314,959	312,406	9,564	10,026	11,019	2.9%	3.1%	3.4%
Lamar	5,263	5,282	5,371	5,100	5,103	5,158	163	179	213	3.1%	3.4%	4.0%
Lauderdale	44,245	44,359	43,469	42,773	42,865	41,741	1,472	1,494	1,728	3.3%	3.4%	4.0%
Lawrence	16,204	16,327	15,981	15,801	15,894	15,480	403	433	501	2.5%	2.7%	3.1%
Lee	90,144	90,076	88,508	87,503	87,596	85,371	2,641	2,480	3,137	2.9%	2.8%	3.5%
Limestone	57,926	58,227	56,870	56,575	56,761	55,292	1,351	1,466	1,578	2.3%	2.5%	2.8%
Lowndes	3,899	3,903	3,894	3,718	3,706	3,691	181	197	203	4.6%	5.0%	5.2%
Macon	7,797	7,766	7,708	7,427	7,424	7,277	370	342	431	4.7%	4.4%	5.6%
Madison	225,043	226,290	220,556	219,571	220,458	214,158	5,472	5,832	6,398	2.4%	2.6%	2.9%
Marengo	7,257	7,354	7,354	6,986	7,051	7,037	271	303	317	3.7%	4.1%	4.3%
Marion	12,075	12,275	12,192	11,690	11,852	11,723	385	423	469	3.2%	3.4%	3.8%
Marshall	45,036	45,225	45,052	43,905	44,058	43,692	1,131	1,167	1,360	2.5%	2.6%	3.0%
Mobile	189,981	190,739	187,183	183,495	183,703	179,804	6,486	7,036	7,379	3.4%	3.7%	3.9%
Monroe	6,665	6,704	6,595	6,361	6,346	6,254	304	358	341	4.6%	5.3%	5.2%
Montgomery	105,487	105,775	104,205	102,123	102,266	100,400	3,364	3,509	3,805	3.2%	3.3%	3.7%
Morgan	61,450	61,934	60,471	59,981	60,372	58,721	1,469	1,562	1,750	2.4%	2.5%	2.9%
Perry	2,391	2,394	2,472	2,225	2,231	2,266	166	163	206	6.9%	6.8%	8.3%
Pickens	6,925	6,963	6,856	6,648	6,654	6,534	277	309	322	4.0%	4.4%	4.7%
Pike	15,253	15,380	15,324	14,695	14,833	14,700	558	547	624	3.7%	3.6%	4.1%
Randolph	8,835	8,700	8,627	8,360	8,401	8,278	475	299	349	5.4%	3.4%	4.0%
Russell	23,032	23,117	22,958	22,218	22,267	22,028	814	850	930	3.5%	3.7%	4.1%
Shelby	124,452	124,623	124,131	121,615	121,662	120,764	2,837	2,961	3,367	2.3%	2.4%	2.7%
St. Clair	45,965	46,087	45,910	44,903	44,922	44,591	1,062	1,165	1,319	2.3%	2.5%	2.9%
Sumter	4,352	4,395	4,359	4,125	4,157	4,069	227	238	290	5.2%	5.4%	6.7%
Talladega	34,989	35,266	34,888	33,901	34,073	33,598	1,088	1,193	1,290	3.1%	3.4%	3.7%
Tallapoosa	16,425	16,543	16,672	15,922	15,995	15,997	503	548	675	3.1%	3.3%	4.0%
Tuscaloosa	113,349	113,276	111,261	109,357	109,681	106,956	3,992	3,595	4,305	3.5%	3.2%	3.9%
Walker	27,414	27,477	27,376	26,657	26,665	26,474	757	812	902	2.8%	3.0%	3.3%
Washington	7,429	7,549	7,351	7,193	7,298	7,075	236	251	276	3.2%	3.3%	3.8%
Wilcox	3,490	3,477	3,569	3,296	3,280	3,330	194	197	239	5.6%	5.7%	6.7%
Winston	9,930	10,089	9,938	9,646	9,765	9,577	284	324	361	2.9%	3.2%	3.6%
United States (Seasonally Adjusted)	170,342,000	170,380,000	168,315,000	163,106,000	163,366,000	161,219,000	7,236,000	7,015,000	7,097,000	4.2%	4.1%	4.2%
United States (Not Seasonally Adj.)	171,646,000	171,343,000	169,723,000	163,799,000	163,883,000	162,038,000	7,847,000	7,460,000	7,685,000	4.6%	4.4%	4.5%

Counties and Metropolitan Statistical Areas are comparable to the not seasonally adjusted labor force data.

Estimates prepared by the Alabama Department of Workforce in cooperation with the Bureau of Labor Statistics, based on a 2024 benchmark.

ALABAMA METROPOLITAN STATISTICAL AREA UNEMPLOYMENT RATES


Estimates prepared by the Alabama Department of Workforce in Cooperation with the Bureau of Labor Statistics, based on 2024 benchmark.

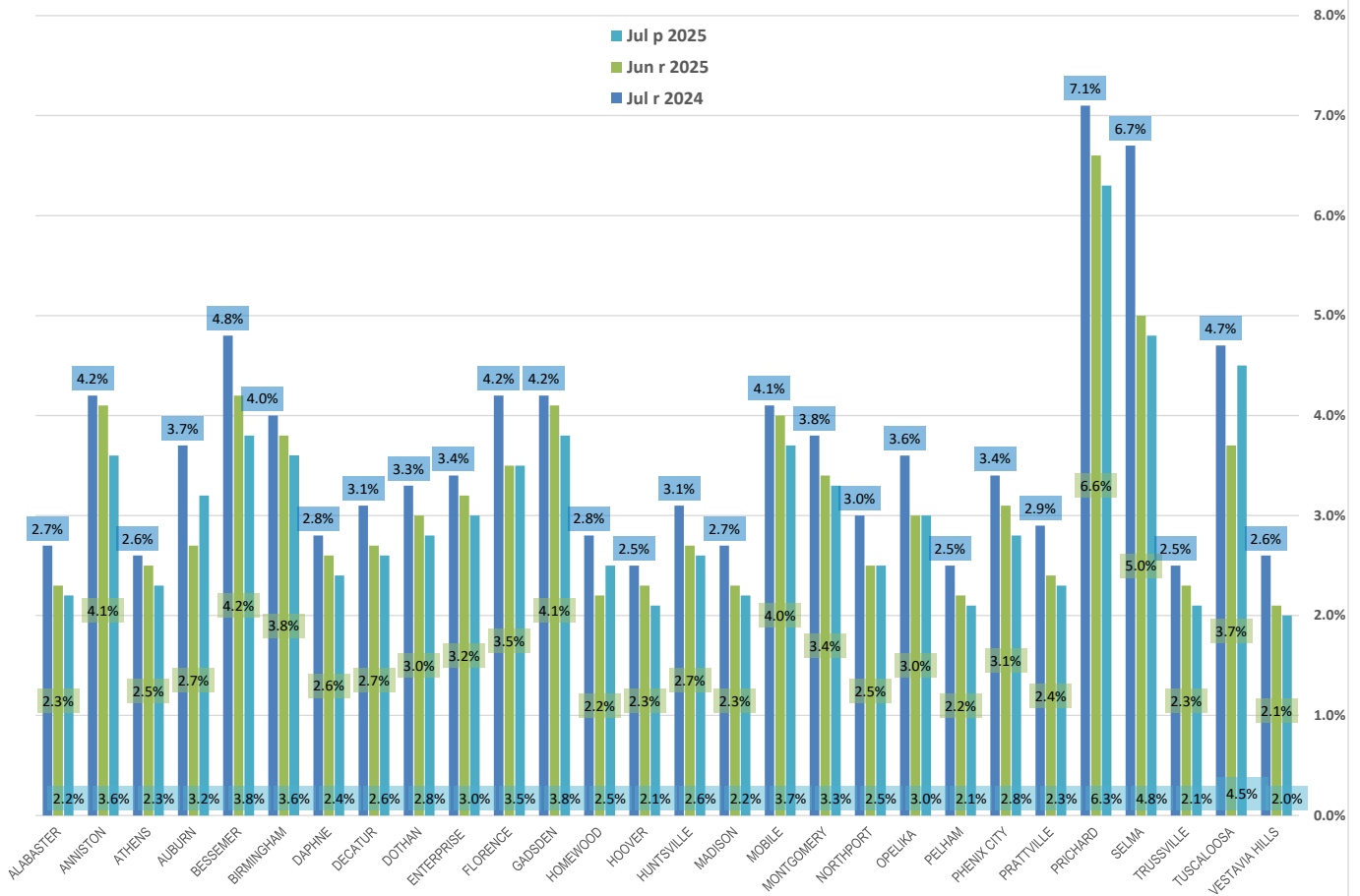
**METROPOLITAN STATISTICAL AREAS
CIVILIAN LABOR FORCE DATA**

Area	Civilian Labor Force			Employment			Unemployment			Unemployment Rate		
	Jul p 2025	Jun r 2025	Jul r 2024	Jul p 2025	Jun r 2025	Jul r 2024	Jul p 2025	Jun r 2025	Jul r 2024	Jul p 2025	Jun r 2025	Jul r 2024
Anniston-Oxford MSA	50,491	50,484	49,862	48,813	48,799	48,040	1,678	1,685	1,822	3.3%	3.3%	3.7%
Auburn-Opelika MSA	97,941	97,842	96,216	94,930	95,020	92,648	3,011	2,822	3,568	3.1%	2.9%	3.7%
Birmingham MSA	578,486	579,549	577,261	562,879	563,072	558,904	15,607	16,477	18,357	2.7%	2.8%	3.2%
Daphne-Fairhope-Foley MSA	118,698	119,482	119,577	115,824	116,287	116,087	2,874	3,195	3,490	2.4%	2.7%	2.9%
Decatur MSA	77,654	78,261	76,452	75,782	76,266	74,201	1,872	1,995	2,251	2.4%	2.5%	2.9%
Dothan MSA	68,660	68,887	68,627	66,750	66,824	66,340	1,910	2,063	2,287	2.8%	3.0%	3.3%
Florence-Muscle Shoals MSA	70,668	70,913	69,398	68,338	68,480	66,711	2,330	2,433	2,687	3.3%	3.4%	3.9%
Gadsden MSA	42,759	43,205	42,402	41,457	41,774	40,858	1,302	1,431	1,544	3.0%	3.3%	3.6%
Huntsville MSA	282,969	284,517	277,426	276,146	277,219	269,450	6,823	7,298	7,976	2.4%	2.6%	2.9%
Mobile MSA	189,981	190,739	187,183	183,495	183,703	179,804	6,486	7,036	7,379	3.4%	3.7%	3.9%
Montgomery MSA	181,609	182,133	179,531	176,383	176,604	173,418	5,226	5,529	6,113	2.9%	3.0%	3.4%
Tuscaloosa MSA	128,242	128,252	126,027	123,601	123,934	120,961	4,641	4,318	5,066	3.6%	3.4%	4.0%

Counties and Metropolitan Statistical Areas are comparable to the not seasonally adjusted labor force data.

Estimates prepared by the Alabama Department of Workforce in cooperation with the Bureau of Labor Statistics, based on a 2024 benchmark.

SELECTED CITY UNEMPLOYMENT RATES



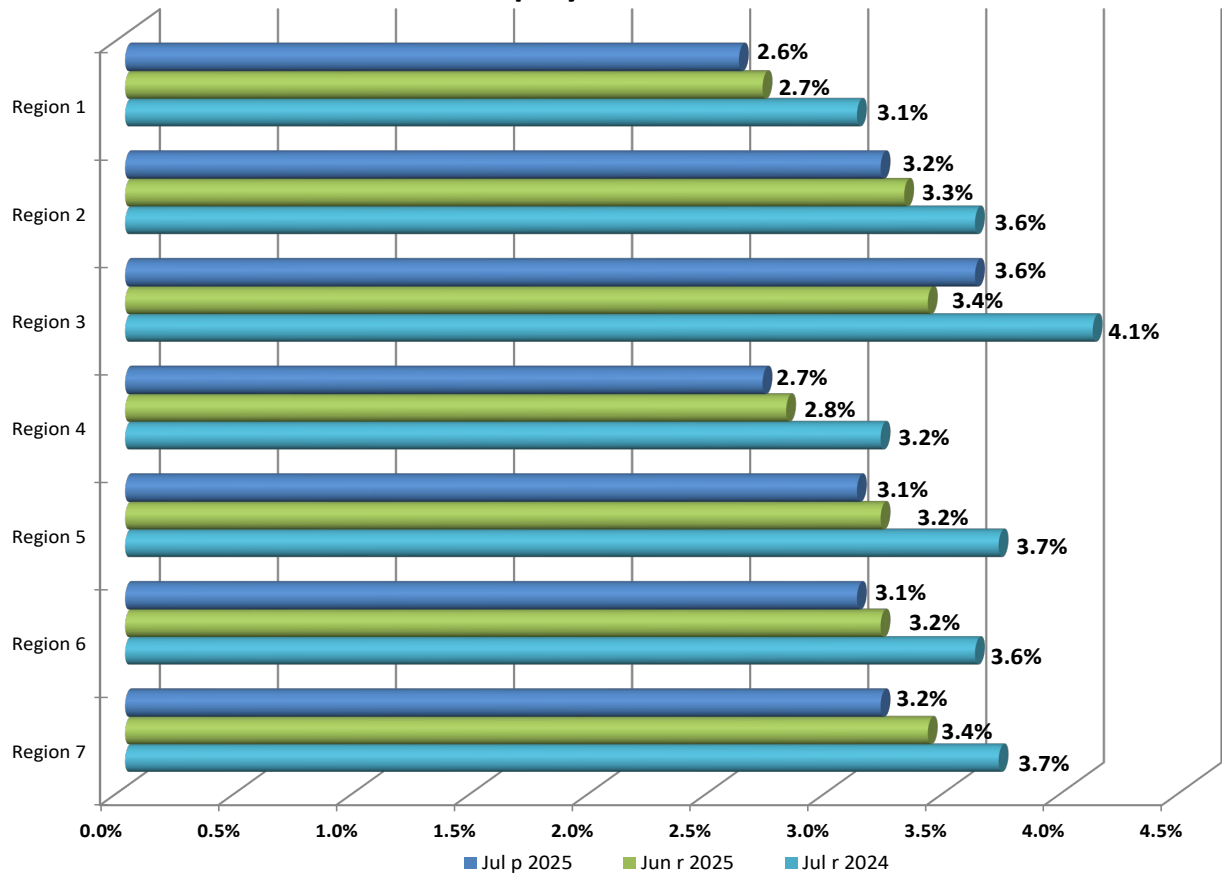
CITY AREAS CIVILIAN LABOR FORCE DATA

Area	Civilian Labor Force			Employment			Unemployment			Unemployment Rate		
	Jul p 2025	Jun r 2025	Jul r 2024	Jul p 2025	Jun r 2025	Jul r 2024	Jul p 2025	Jun r 2025	Jul r 2024	Jul p 2025	Jun r 2025	Jul r 2024
ALABASTER CITY	18,209	18,241	18,184	17,809	17,816	17,684	400	425	500	2.2%	2.3%	2.7%
ANNISTON CITY	8,339	8,376	8,251	8,035	8,032	7,907	304	344	344	3.6%	4.1%	4.2%
ATHENS CITY	15,617	15,686	15,308	15,251	15,301	14,905	366	385	403	2.3%	2.5%	2.6%
AUBURN CITY	40,537	40,376	39,756	39,228	39,270	38,272	1,309	1,106	1,484	3.2%	2.7%	3.7%
BESSEMER CITY	9,862	9,903	9,888	9,484	9,489	9,412	378	414	476	3.8%	4.2%	4.8%
BIRMINGHAM CITY	95,471	95,684	95,182	92,029	92,073	91,328	3,442	3,611	3,854	3.6%	3.8%	4.0%
DAPHNE CITY	14,792	14,888	14,898	14,441	14,499	14,474	351	389	424	2.4%	2.6%	2.8%
DECATUR CITY	28,649	28,865	28,197	27,910	28,092	27,324	739	773	873	2.6%	2.7%	3.1%
DOTHAN CITY	32,459	32,574	32,415	31,562	31,607	31,348	897	967	1,067	2.8%	3.0%	3.3%
ENTERPRISE CITY	12,533	12,563	12,454	12,153	12,161	12,034	380	402	420	3.0%	3.2%	3.4%
FLORENCE CITY	18,732	18,764	18,400	18,070	18,109	17,634	662	655	766	3.5%	3.5%	4.2%
GADSDEN CITY	12,778	12,910	12,645	12,291	12,385	12,113	487	525	532	3.8%	4.1%	4.2%
HOMEWOOD CITY	14,900	14,870	14,836	14,534	14,541	14,423	366	329	413	2.5%	2.2%	2.8%
HOOVER CITY	50,180	50,289	50,015	49,119	49,141	48,753	1,061	1,148	1,262	2.1%	2.3%	2.5%
HUNTSVILLE CITY	123,250	123,968	120,839	120,106	120,589	117,151	3,144	3,379	3,688	2.6%	2.7%	3.1%
MADISON CITY	32,612	32,752	31,969	31,884	32,007	31,111	728	745	858	2.2%	2.3%	2.7%
MOBILE CITY	87,697	88,092	86,308	84,435	84,531	82,737	3,262	3,561	3,571	3.7%	4.0%	4.1%
MONTGOMERY CITY	91,082	91,342	89,988	88,087	88,211	86,601	2,995	3,131	3,387	3.3%	3.4%	3.8%
NORTHPORT CITY	15,619	15,666	15,355	15,224	15,269	14,890	395	397	465	2.5%	2.5%	3.0%
OPELIKA CITY	16,452	16,474	16,162	15,962	15,979	15,573	490	495	589	3.0%	3.0%	3.6%
PELHAM CITY	14,591	14,625	14,554	14,291	14,297	14,191	300	328	363	2.1%	2.2%	2.5%
PHENIX CITY	17,055	17,138	16,954	16,572	16,605	16,382	483	533	572	2.8%	3.1%	3.4%
PRATTVILLE CITY	19,691	19,731	19,466	19,230	19,253	18,897	461	478	569	2.3%	2.4%	2.9%
PRICHARD CITY	6,506	6,537	6,430	6,098	6,105	5,975	408	432	455	6.3%	6.6%	7.1%
SELMA CITY	6,461	6,543	6,507	6,150	6,214	6,072	311	329	435	4.8%	5.0%	6.7%
TRUSSVILLE CITY	13,991	14,025	13,935	13,696	13,703	13,593	295	322	342	2.1%	2.3%	2.5%
TUSCALOOSA CITY	51,267	51,001	50,260	48,973	49,118	47,898	2,294	1,883	2,362	4.5%	3.7%	4.7%
VESTAVIA HILLS CITY	18,757	18,796	18,728	18,387	18,396	18,246	370	400	482	2.0%	2.1%	2.6%

City Areas are comparable to the not seasonally adjusted labor force data.

Estimates prepared by the Alabama Department of Workforce in cooperation with the Bureau of Labor Statistics, based on a 2024 benchmark.

Alabama Workforce Regions Unemployment Rates



Areas are comparable to the not seasonally adjusted labor force data.

WORKFORCE REGIONS CIVILIAN LABOR FORCE DATA

Area	Civilian Labor Force			Employment			Unemployment			Unemployment Rate		
	Jul p 2025	Jun r 2025	Jul r 2024	Jul p 2025	Jun r 2025	Jul r 2024	Jul p 2025	Jun r 2025	Jul r 2024	Jul p 2025	Jun r 2025	Jul r 2024
Region 1	605,450	609,055	598,907	589,686	592,325	580,310	15,764	16,730	18,597	2.6%	2.7%	3.1%
Region 2	160,106	160,849	158,569	154,932	155,558	152,799	5,174	5,291	5,770	3.2%	3.3%	3.6%
Region 3	160,449	160,719	158,529	154,736	155,214	152,088	5,713	5,505	6,441	3.6%	3.4%	4.1%
Region 4	569,694	570,723	568,466	554,318	554,510	550,407	15,376	16,213	18,059	2.7%	2.8%	3.2%
Region 5	362,968	363,739	359,194	351,720	352,276	345,837	11,248	11,463	13,357	3.1%	3.2%	3.7%
Region 6	164,409	164,995	164,672	159,376	159,706	158,717	5,033	5,289	5,955	3.1%	3.2%	3.6%
Region 7	355,443	357,367	354,072	344,154	345,073	340,871	11,289	12,294	13,201	3.2%	3.4%	3.7%

Areas are comparable to the not seasonally adjusted labor force data.

Alabama Counties Ranked in Descending Order Unemployment Rates

Current July 2025

2024 Annual Average

Rank	Area	Rate
1	Perry County, AL	6.9%
2	Greene County, AL	5.8%
3	Wilcox County, AL	5.6%
4	Randolph County, AL	5.4%
5	Sumter County, AL	5.2%
6	Clarke County, AL	5.0%
7	Dallas County, AL	4.8%
8	Macon County, AL	4.7%
9	Lowndes County, AL	4.6%
9	Monroe County, AL	4.6%
11	Conecuh County, AL	4.2%
11	Hale County, AL	4.2%
13	Choctaw County, AL	4.0%
13	Pickens County, AL	4.0%
15	Bullock County, AL	3.8%
16	Barbour County, AL	3.7%
16	Marengo County, AL	3.7%
16	Pike County, AL	3.7%
19	Butler County, AL	3.6%
20	Escambia County, AL	3.5%
20	Russell County, AL	3.5%
20	Tuscaloosa County, AL	3.5%
23	Jackson County, AL	3.4%
23	Mobile County, AL	3.4%
25	Calhoun County, AL	3.3%
25	Covington County, AL	3.3%
25	Lauderdale County, AL	3.3%
28	Colbert County, AL	3.2%
28	Dale County, AL	3.2%
28	Marion County, AL	3.2%
28	Montgomery County, AL	3.2%
28	Washington County, AL	3.2%
33	Crenshaw County, AL	3.1%
33	Lamar County, AL	3.1%
33	Talladega County, AL	3.1%
33	Tallapoosa County, AL	3.1%
37	Chambers County, AL	3.0%
37	Cherokee County, AL	3.0%
37	Etowah County, AL	3.0%
40	Henry County, AL	2.9%
40	Jefferson County, AL	2.9%
40	Lee County, AL	2.9%
40	Winston County, AL	2.9%
44	Coffee County, AL	2.8%
44	Coosa County, AL	2.8%
44	Fayette County, AL	2.8%
44	Franklin County, AL	2.8%
44	Houston County, AL	2.8%
44	Walker County, AL	2.8%
50	Geneva County, AL	2.7%
51	Bibb County, AL	2.6%
51	Chilton County, AL	2.6%
51	Clay County, AL	2.6%
51	DeKalb County, AL	2.6%
55	Cleburne County, AL	2.5%
55	Cullman County, AL	2.5%
55	Lawrence County, AL	2.5%
55	Marshall County, AL	2.5%
59	Autauga County, AL	2.4%
59	Baldwin County, AL	2.4%
59	Madison County, AL	2.4%
59	Morgan County, AL	2.4%
63	Blount County, AL	2.3%
63	Elmore County, AL	2.3%
63	Limestone County, AL	2.3%
63	St. Clair County, AL	2.3%
63	Shelby County, AL	2.3%

Rank	Area	Rate
1	Greene County, AL	6.7%
1	Perry County, AL	6.7%
3	Wilcox County, AL	6.2%
4	Dallas County, AL	5.5%
5	Clarke County, AL	5.2%
6	Monroe County, AL	5.0%
7	Lowndes County, AL	4.7%
7	Sumter County, AL	4.7%
9	Choctaw County, AL	4.5%
10	Macon County, AL	4.4%
11	Barbour County, AL	4.3%
11	Hale County, AL	4.3%
13	Conecuh County, AL	4.2%
14	Escambia County, AL	4.1%
15	Marengo County, AL	4.0%
16	Butler County, AL	3.9%
16	Pickens County, AL	3.9%
18	Mobile County, AL	3.8%
19	Bullock County, AL	3.7%
20	Randolph County, AL	3.6%
20	Russell County, AL	3.6%
20	Washington County, AL	3.6%
23	Dale County, AL	3.5%
23	Jackson County, AL	3.5%
23	Marion County, AL	3.5%
23	Pike County, AL	3.5%
27	Crenshaw County, AL	3.4%
27	Fayette County, AL	3.4%
27	Lamar County, AL	3.4%
27	Montgomery County, AL	3.4%
27	Talladega County, AL	3.4%
27	Tallapoosa County, AL	3.4%
33	Colbert County, AL	3.3%
33	Coosa County, AL	3.3%
33	Covington County, AL	3.3%
33	Etowah County, AL	3.3%
33	Winston County, AL	3.3%
38	Calhoun County, AL	3.2%
38	Henry County, AL	3.2%
38	Lauderdale County, AL	3.2%
41	Cherokee County, AL	3.1%
41	Coffee County, AL	3.1%
41	Houston County, AL	3.1%
41	Jefferson County, AL	3.1%
41	Tuscaloosa County, AL	3.1%
41	Walker County, AL	3.1%
47	Bibb County, AL	3.0%
47	Clay County, AL	3.0%
49	Franklin County, AL	2.9%
49	Geneva County, AL	2.9%
51	Chambers County, AL	2.8%
51	Chilton County, AL	2.8%
51	Cleburne County, AL	2.8%
51	Lee County, AL	2.8%
55	Autauga County, AL	2.7%
55	Baldwin County, AL	2.7%
55	Blount County, AL	2.7%
55	Cullman County, AL	2.7%
55	DeKalb County, AL	2.7%
55	Lawrence County, AL	2.7%
55	Marshall County, AL	2.7%
62	Elmore County, AL	2.6%
62	Madison County, AL	2.6%
62	Morgan County, AL	2.6%
62	St. Clair County, AL	2.6%
66	Limestone County, AL	2.5%
67	Shelby County, AL	2.4%

Release Schedule

Local Area Unemployment Statistics & Current Employment Statistics 2025 Publication Schedule	
Reference Month	Publication Date
January	Monday, 3/17/2025, 8:00AM
February	Friday, 3/28/2025, 8:00AM
March	Friday, 4/18/2025, 8:00AM
April	Friday, 5/16/2025, 8:00AM <i>Southeastern States Map available Wednesday, 5/21/2025</i>
May	Friday, 6/20/2025, 8:00AM <i>Southeastern States Map available Tuesday, 6/24/2025</i>
June	Friday, 7/18/2025, 8:00AM
July	Friday, 8/15/2025, 8:00AM <i>Southeastern States Map available Tuesday, 8/19/2025</i>
August	Friday, 9/19/2025, 8:00AM
September	Friday, 10/17/2025, 8:00AM <i>Southeastern States Map available Tuesday, 10/21/2025</i>
October	Friday, 11/21/2025, 8:00AM
November	Friday, 12/19/2025, 8:00AM
December	Friday, 1/23/2026, 8:00AM <i>Southeastern States Map available Tuesday, 1/27/2026</i>



Technical Support

Local Area Unemployment Statistics
Labor Market Information Division
Alabama Department of Workforce
649 Monroe St, Room 4427
Montgomery, AL 36131-2280

334-956-7485 phone/fax

<http://www2.labor.alabama.gov/Laus/Default.aspx> website

An Equal Opportunity Employer / Program
Auxiliary aids and services available upon request to individuals with disabilities.
Dial 711 for TTY accessibility.